

**MARTIFER**  
METALLIC CONSTRUCTIONS

---

**WE'VE BEEN  
BUILDING**





**MARTIFER  
GROUP**

**PT**

A Martifer iniciou a sua atividade em 1990, no setor das estruturas metálicas. Hoje, é um grupo industrial global focado na área de Construção Metálica.

A Martifer Metallic Constructions é um player reconhecido globalmente no setor. A empresa está focada em três áreas geográficas principais: Europa Ocidental, Europa de Leste e Médio Oriente e África.

Fornecer soluções globais e inovadoras de engenharia, nomeadamente em projetos de elevada complexidade e dimensão, nos segmentos de Construção Metalomecânica, Fachadas em Alumínio e Vidro e Indústria Naval.

**EN**

Martifer started its activity in 1990, in the steel structures sector. Today, it is a global industrial group focused on the Metallic Constructions area.

Martifer Metallic Constructions is a globally recognized player in the sector. The company is focused on three main geographies: Western Europe, Eastern Europe and Middle East and Africa.

It provides global and innovative engineering solutions, namely in large and complex projects, in the segments of Metal Mechanical Construction, Aluminium and Glass Façades and Naval Industry.

**ES**

Martifer inició su actividad en 1990 en el sector de las estructuras metálicas. Hoy es un grupo industrial global centrado en el área de Construcción Metálica.

Martifer Metallic Constructions es una empresa reconocida globalmente en el sector. La empresa está centrada en tres áreas geográficas principales: Europa Occidental, Europa del Este y Oriente Medio y África.

Suministra soluciones globales e innovadoras de ingeniería, en particular en proyectos de gran complejidad y dimensión, en los segmentos de Construcción Metalmeccánica, Fachadas en Aluminio y Vidrio e Industria Naval.



FR

Martifer a commencé son activité en 1990, dans le secteur des charpentes métalliques. Aujourd'hui elle est un groupe industriel mondial focalisé dans le domaine de la Construction Métallique.

Martifer Metallic Constructions est un player mondialement reconnu dans ce secteur. La société est focalisé dans trois principales zones géographiques: Europe Occidentale, Europe de Leste et Moyen Orient et Afrique.

Elle propose des Solutions mondiales et innovatrices en Ingénierie, notamment dans les projets de grande complexité et dimension, dans les segments de Construction Métallo mécanique, Façades en aluminium et verre et Industrie Naval.

## MARTIFER METALLIC CONSTRUCTIONS

A Martifer Metallic Constructions tem como principais atividades a Construção Metalomecânica, Fachadas em Alumínio e Vidro e Indústria Naval.

Martifer Metallic Constructions has as its main activities Metal Mechanical Construction, Aluminium and Glass Façades and Naval Industry.

Martifer Metallic Constructions tiene como actividades principales la Construcción Metalmeccánica, Fachadas en Aluminio y Vidrio e Industria Naval.

Martifer Metallic Constructions exerce principalement ses activités dans les domaines de la Construction Métallo Mécanique, Façades en Aluminium et Verre et Industrie Naval.

### MARTIFER METALLIC CONSTRUCTIONS

Construção Metalomecânica  
Metal Mechanical Construction  
Construcción Metalmeccánica  
Construction Métallo Mécanique

Alumínio e Vidro  
Aluminium and Glass  
Aluminio y Vidrio  
Aluminium et Verre

### WEST SEA / NAVALRIA

Construção e Reparação Naval  
Shipbuilding and Repair  
Construcción y Reparación Naval  
Construction et Réparation Navale

PT

Na Europa, no Médio Oriente ou em África, a Martifer tem a capacidade de realizar os projetos mais complexos, ultrapassando os maiores desafios técnicos e geográficos.

EN

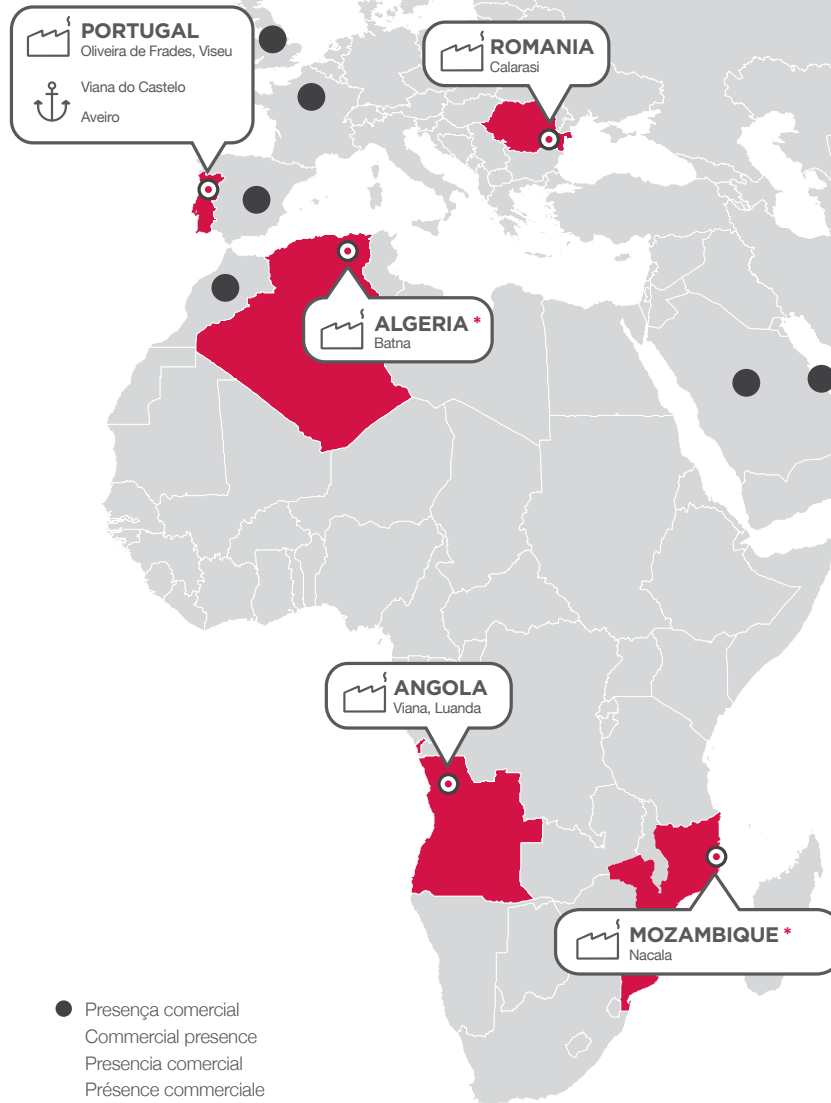
In Europe, in the Middle East or in Africa, Martifer has the capacity to build the most complex projects, overcoming the largest technical and geographical challenges.

ES

En Europa, en Oriente Medio o en África, Martifer tiene la capacidad de realizar los proyectos más complejos, superando los mayores desafíos técnicos y geográficos.

FR

En Europe, Moyen Orient et Afrique, Martifer a la capacité de réaliser les projets les plus complexes, en surmontant les plus grand défis techniques et géographiques.



**PORTUGAL** Oliveira de Frades | Headquarters



**PORTUGAL** Viana do Castelo



**PORTUGAL** Aveiro



**ROMANIA** Calarasi



**ALGERIA** Batna



**MOZAMBIQUE** Nacala



**ANGOLA** Viana, Luanda



## PORTFOLIO



### TRANSPORT INFRASTRUCTURES

Dublin Airport  
Francisco Sá Carneiro Airport  
Birmingham New Street / John Lewis  
Catumbela International Airport  
Nacala Airport  
London Cable Car



### RESIDENTIAL & HOTELS

Eurostars Oasis Plaza Hotel  
Horizon Tours (Rani Towers)  
375 Kensington  
Holland Green  
Melá Braga Hotel



### HEALTHCARE

Royal Liverpool Hospital  
INL - Nanotechnology Laboratory  
CHU D'Amiens Hospital  
CHR D'Orleans Hospital  
Champalimaud Centre



### COMMERCIAL & OFFICES

Torre 30  
Edp Porto  
Forum Les Halles  
Banco Popular  
Dolce Vita Funchal  
Zero Zero Tower  
Serrano Tower  
Torre Triana Podium  
King Abdullah Financial District 4.02 / 5.03  
Bbva Headquarters (Phase 1)  
Edp Headquarters  
Fénix Tower  
Kilamba Building  
Natura Towers - North Tower  
Ancelle  
Oz'one  
Horizon Tours (Rani Towers)  
Birmingham New Street / John Lewis



### CULTURE/LEISURE

Amanhã Museum  
Alcobendas Art Center  
SSE Hydro  
Congress Centre Expo Zaragoza  
Centro Polivalente Barceló  
Holland Green



## DUBLIN AIRPORT

Client	Mace Group (Dublin Airport Authority?)
Year	2011
Location	Dublin, Ireland
Architect	Pascall + Watson Architects
Façade Consultant	Arup Ireland
Scope	1,500 t of architectural steel structure, 1,000 t of structural steelwork 35,000 sqm of aluminium standing seam system, 45,000 sqm of aluminium composite panel, 9,000 sqm of glass façade

**PRIZES** Saint Gobain Gyproc International Trophy 2012 - Irish Category  
IStructE Awards 2011 - Transportation Structures  
APM Awards 2011 - Overseas Project of the Year  
Public Building of the Year Award 2010





## FRANCISCO SÁ CARNEIRO AIRPORT

Client	Consórcio ASC 2000
Year	2007
Location	Porto, Portugal
Architect	ANA - Arqº João Belo
Scope	9,000 t of steel structure 70,000 sqm of structural steelwork, aluminium composite panel, cladding, metalwork, point-fixed glass system, spider glass system, structural glass curtain wall and skylights

**PRIZES** European Steel Design Awards 2007 | ECCS - European Convention for Construction Steelwork  
ACI Airport Service Quality Award - Best Airport in Europe 2007  
ACI Airport Service Quality Award - 3rd Best Airport in Europe 2006





## BIRMINGHAM NEW STREET/JOHN LEWIS

Client	Mace Group
Year	2014
Location	Birmingham, United Kingdom
Architect	AZPML
Certification	BREEAM - Excellent (John Lewis) / Very Good (Railway Station)
Scope	1,000 t of structural steelwork 360 t of skylight truss 70,000 sqm of structural steel façade and skylight, stainless steel cladding, aluminum composite panel cladding and anti-blast curtain wall 6,000 sqm of unitized curtain wall with windows
<b>PRIZES</b>	SAPA Building System   Portugal Awards 2015 - Protection and Safety Solutions







## CATUMBELA INTERNATIONAL AIRPORT

Client	Construtora Norberto Odebrecht
Year	2012
Location	Catumbela, Angola
Façade Consultant	DAR Consultants
Scope	200 t spatial network metal structure 150 t of jet bridge and control tower steel structure 6 000 sqm of kalzip roof 3 000 sqm of stick system curtain wall 10 000 sqm of aluminium composite panel cladding 400 sqm of glass canopies 600 sqm of sandwich panel claddings 155 sqm of automatic doors



## NACALA AIRPORT

Client	Construtora Norberto Odebrecht
Year	2015
Location	Nacala, Mozambique
Architect	Fernandes Arquitetura
Scope	90 t of structural steel (Control Tower) 3,750 sqm of stick system
<b>PRIZES</b>	Engineering News-Record Magazine   Best Engineering Project 2016 - Airports





## LONDON CABLE CAR

Client	Mace Group
Year	2013
Location	London, United Kingdom
Architect	Wilkinson Eyre
Certification	BREEAM - Excellent
Scope	80 t of structural steel 3 t of structural stainless steel 1,200 sqm of bomb blast façade 1,600 sqm of stainless steel cladding 1,000 sqm of U-glass façade 500 sqm of balustrade

**PRIZES** The Structural Awards 2013 - Infrastructures or Transportation Structures  
Structural Steel Design Awards 2013



## EUROSTARS OASIS PLAZA HOTEL

Client	CENTRO CERRO – Empresa de Construção Civil e Obras Públicas
Year	2010
Location	Figueira da Foz, Portugal
Architect	Plarq - Estudos de Arquitectura e Urbanismo
Façade Consultant	Grafermonte
Scope	5,700 sqm of curtain wall and windows systems 1,900 sqm of aluminium composite panel cladding 1,900 ml of aluminium balustrades (Martifer system solution)



## **HORIZON TOURS (RANI TOWERS)**

Client	Steffanutti Stocks (SS construções)
Year	2015
Location	Maputo, Mozambique
Architect	DSA Architects International
Scope	9,000 sqm stick curtain wall system 2,800 sqm unitized system

**PRIZES** SAPA Building System | Portugal Awards 2016 - Best Engineering Solutions





## 375 KENSINGTON

Client	St. Edward Homes
Year	2015
Location	London, United Kingdom
Architect	Scott Brownrigg
Façade Consultant	Wintech
Scope	1,700 sqm of stick system curtain wall 2,000 sqm of windows system 3,700 sqm of stone cladding 1,300 sqm of aluminium cladding sheet 331 lm of juliet balconies 245 lm of glass balustrades





## **HOLLAND GREEN**

Client	Mace Group
Year	2015
Location	London, United Kingdom
Architect	Allies & Morrison
Façade Consultant	ARUP
Certification	BREEAM - Very Good (Building) / Excellent (Museum)
Scope	4,720 sqm of windows 1,000 sqm of glass balustrade 2,200 sqm of stick system curtain wall 2,770 sqm of structural insulated panels





## MELIÁ BRAGA HOTEL

Client	Britalar
Year	2009
Location	Braga, Portugal
Architect	Fernando Jorge
Scope	1,900 sqm of curtain wall stick system and steel/stainless steel works 2,600 sqm of aluminium composite panel cladding





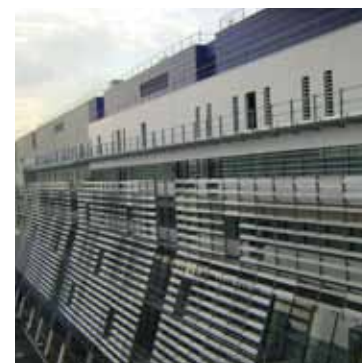
## ROYAL LIVERPOOL HOSPITAL

Client	Carillion
Year	2017
Location	Liverpool, United Kingdom
Architect	HKS Architects Limited
Certification	BREEAM - Very Good
Scope	Unitized curtain walling 3,000 sqm glazing 7,500 sqm composite panel



## INL - NANOTECHNOLOGY LABORATORY

Client	Mota-Engil   Casais
Year	2010
Location	Braga, Portugal
Architect	BMM - Arquitectos Balonas Menano Morshel
Scope	3,700 sqm of stick system curtain wall 625 sqm of windows 350 sqm of canopies



## ♥ CHU D'AMIENS HOSPITAL

Client	CHU Amiens Picardie
Year	2012
Location	Amiens, France
Architect	AART FARAH – Architectes Associés
Scope	800 t of structural steel structure 120 t of secondary steel structure 3,000 sqm of stick curtain wall system 340 un of windows system 4,900 sqm of solar shading 6,300 sqm of aluminium composite panel cladding 500 ml of glass balustrade 4,300 sqm of grating 400 ml of men safe of fall arrest 750 sqm of louvres type renson







## CHR D'ORLEANS HOSPITAL

Client	DV Construction
Year	2014
Location	Orléans, France
Architect	Groupe-6
Certification	NF HQE Batiments Tertiaires
Scope	1,100 sqm of windows (simple and double skin) 2,000 sqm of stick curtain wall system 2,000 sqm of steel curtain wall system 500 sqm of aluminium composite panel cladding 5,000 un of stores





## CHAMPALIMAUD CENTRE

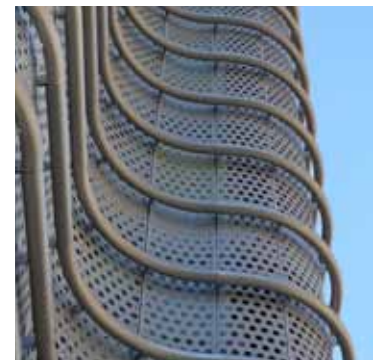
Client	HCI/ Mota Engil
Year	2011
Location	Lisbon, Portugal
Architect	Charles Correa
Scope	3,600 sqm of stick system curtain wall 4,200 sqm of structural curtain wall with fins 2,800 sqm of aluminium composite panel cladding 500 sqm of skylight 600 sqm of solar shading systems





## **TORRE 30**

Client	Hill International / Hispania
Year	2016
Location	Madrid, Spain
Architect	Ruiz Barbarin
Façade Consultant	ENAR
Scope	6,000 sqm of cladding with perforated aluminium sheets 4,000 ml of aluminium tube





## EDP PORTO

Client	Casais
Year	2011
Location	Porto, Portugal
Architect	Apel - Arquitectura, Planeamento, Engenharia
Scope	8,200 sqm of curtain wall and windows systems 4,700 sqm of aluminium composite panel cladding 2,000 units of blades 220 sqm of glass dome





## **FORUM LES HALLES**

Client	Chantiers Modernes Construction, TPI e GTM
Year	2016
Location	Paris, France
Architect	Patrick Berger e Jacques Anziutti
Scope	2,690 sqm of aluminium curtain wall and windows systems 2,117 sqm of blinds 2,194 sqm of steel curtain wall system 1,540 sqm of glass fiber cladding





## BANCO POPULAR AUDITORIUM

Client	Banco Popular
Year	2017
Location	Madrid, Spain
Architect	Ayala
Façade Consultant	ENAR
Scope	Structural glazing façade auditorium with large panels (9,5x2,6 m)



## DOLCE VITA FUNCHAL

Client	Chamartín Imobiliária
Year	2008
Location	Funchal, Madeira, Portugal
Architect	Ricardo Bofill - Taller de Arquitectura, João Francisco Caires e Ass., Sua Kay Arquitectos
Scope	14,000 sqm of structural steelwork, metal work, façades and skylights



## ZERO ZERO TOWER

Client	FCC
Year	2010
Location	Barcelona, Spain
Architect	EMBA
Scope	1,500 t steelworks 18,000 sqm of bespoke unitized system

**PRIZES**

- First Prize Leaf Awards - Best Commercial Building 2011
- First Prize Catalunya Construcció - Best Construction Management 2011
- Nominee Ctuh Awards - Best Tall Building 2011
- Shortlisted Emporis Awards - Best New Skyscraper 2010
- First Prize Actualidad Económica - Best Urban Project 2009





## SERRANO TOWER

Client	Infinorsa / Bovis
Year	2015
Location	Madrid, Spain
Architect	Ortiz y León
Façade Consultant	ENAR
Certification	LEED - GOLD
Scope	5,800 sqm of dismantling works 4,500 sqm of bespoke unitized system 700 sqm steel curtain wall 4,000 m of aluminium column claddings

**PRIZES** International Real Estate Awards Asprima-Sima 2016 | Integral rehabilitation of buildings



## TORRE TRIANA PODIUM

Client	Dragados
Year	2015
Location	Seville, Spain
Architect	César Pelli
Façade Consultant	ENAR
Certification	LEED - GOLD
Scope	8,000 sqm of bespoke unitized system 16,000 m of horizontal louvers 3,800 m of vertical louvers 3,100 sqm of aluminium composite claddings





## **KING ABDULLAH FINANCIAL DISTRICT** 4.02 / 5.03

Client BinLadin Group  
Year 2015  
Location Riyadh, Saudi Arabia  
Architect Adrian Smith + Gordon Gill Architecture (5.03)  
Foster + Partners (4.02)

Certification BREEAM

Scope

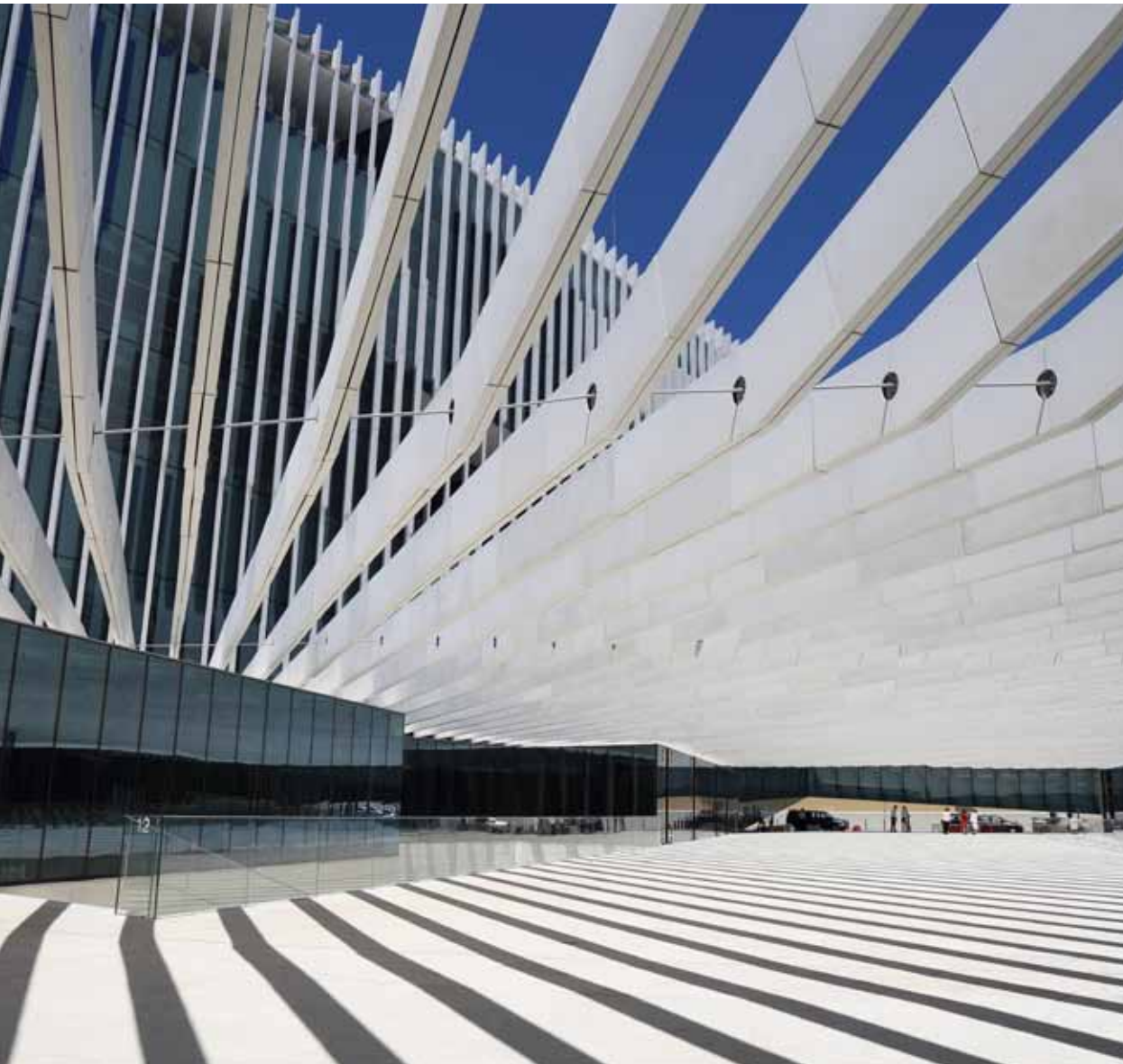
### 4.02

270 t of secondary steel structure  
7,000 sqm of rockwool insulation  
2,300 sqm of interior stone façade  
5,500 sqm of exterior cladding stainless steel  
1,000 sqm of black aluminium composite panel  
4,000 sqm of black aluminium sheet  
4,100 l.n.m of roof shading blades  
4,500 sqm of exterior stone façades

### 5.03

100 t of steel structure  
4,600 sqm of unitized curtain wall  
12,500 sqm of terracotta clay baguettes  
9,000 sqm of exterior stone façades  
4,600 sqm of aluminium composite panel  
1,200 sqm of aluminium louvres  
1,000 sqm of glass fins  
1,400 sqm of horizontal shading blades





## EDP HEADQUARTERS

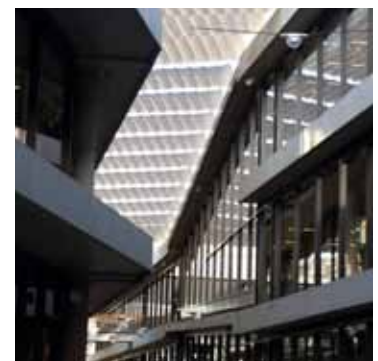
Client	HCI/ Mota Engil
Year	2015
Location	Lisbon, Portugal
Architect	Aires Mateus & Associados
Certification	LEED - PLATINA
Scope	3,100 t of structural steel structure 14,000 sqm of aluminium curtain wall specially developed by Martifer
<b>PRIZES</b>	SAPA Building System   Portugal Awards 2015 - Best Engineering Solutions





## **BBVA HEADQUARTERS (PHASE 1)**

Client	BBVA / Gerens Hill International
Year	2011
Location	Madrid, Spain
Architect	Herzog & De Meuron / Ortiz y León
Façade Consultant	ENAR
Certification	LEED - GOLD
Scope	16,000 sqm curtain wall 308 sqm of skylight, bespoke composite louvers 425 sqm GRCI 655 sqm of metal claddings





## FÉNIX TOWER

Client	Somague Angola
Year	2010
Location	Luanda, Angola
Architect	Costa Lopes. ARQ
Façade Consultant	Energia Técnica / Costa Lopes. ARQ
Scope	850 t of structural steel works 8,016 sqm of metal deck 2,840 sqm of insulation panel 674 sqm of stone cladding 1,950 sqm of stick curtain wall system 350 sqm of windows 1,926 sqm of aluminium blades for shading



## KILAMBA BUILDING

Client	Norafrica
Year	2013
Location	Luanda, Angola
Architect	KLM Arquitectos
Façade Consultant	DAR – Dar Al-handasah
Scope	4,000 sqm of unitized system façade 2,000 of stick curtain wall system 6,000 sqm of aluminium composite panel cladding 1,190 sqm of grates 900 lin.m of aluminum solar shading blades 400 sqm of windows 200 sqm of fire resistant doors and façades



## **NATURA TOWERS - NORTH TOWER**

Client	MSF
Year	2010
Location	Lisbon, Portugal
Architect	G&J Arquitectos
Scope	60 t of structural steel structure 6,500 sqm of stick curtain wall system with openings and photovoltaic glazing





## ANCELLE

Client	Unibail Investissement II
Year	2013
Location	Paris, France
Architect	CALQ
Certification	NF HQE Batiments Tertiaires
Scope	6,000 sqm of unitized system 300 sqm of spider glass façade



## OZ'ONE

Client	Eiffage
Year	2012
Location	Montpellier, France
Architect	AS.Architecture-Studio – Carsten Brøge
Façade Consultant	Qualiconsult
Certification	NF BT - Label HPE
Scope	2,333 sqm of curtain wall structural glass - VEC system 1,120 sqm of windows 923 sqm of blinds 2,451 sqm of phenolic panel cladding 670 sqm of blades 2,516 sqm of ITE panel cladding



## **AMANHÃ MUSEUM**

Client Consórcio Beirario  
 Year 2013  
 Location Rio de Janeiro, Brazil  
 Architect Santiago Calatrava  
 Scope 790 sqm of structural glazed VEC system and windows  
 3,975 sqm of aluminium composite panel cladding

**PRIZES** Leading Culture Destinations Award 2016: Best New Museum in South and Central America  
 Business Insider (2016): The 100 coolest works of architecture in the world





## ALCOBENDAS ART CENTER

Client	FCC Construcción
Year	2010
Location	Madrid, Spain
Architect	LAUD S.L.
Scope	575 sqm photovoltaic façade 1,300 sqm curtain wall system 5,300 sqm of aluminium and fenolic claddings 180 sqm of skylight



## SSE HYDRO

Client	Bovis Lend Lease
Year	2013
Location	Glasgow, Scotland
Architect	Fosters + Partners
Certification	BREEAM - Very Good
Scope	342 sqm of stick system curtain wall 810 sqm of aluminium composite panel 994 sqm of aluminium louvres 130 sqm of power-driven aluminium blades 1,000 sqm of aluminium cladding





## **CPB** CENTRO POLIVALENTE BARCELÓ

Client	UTE Acciona-Dragados
Year	2012
Location	Madrid, Spain
Architect	Nieto Sobejano Arquitectos
Scope	5,000 sqm of U-glass façades 300 sqm of stick system curtain wall 1,000 sqm ribbed profile 300 sqm of glass balustrades 450 sqm of shopping fronts facades 500 sqm of aluminium composite panel cladding



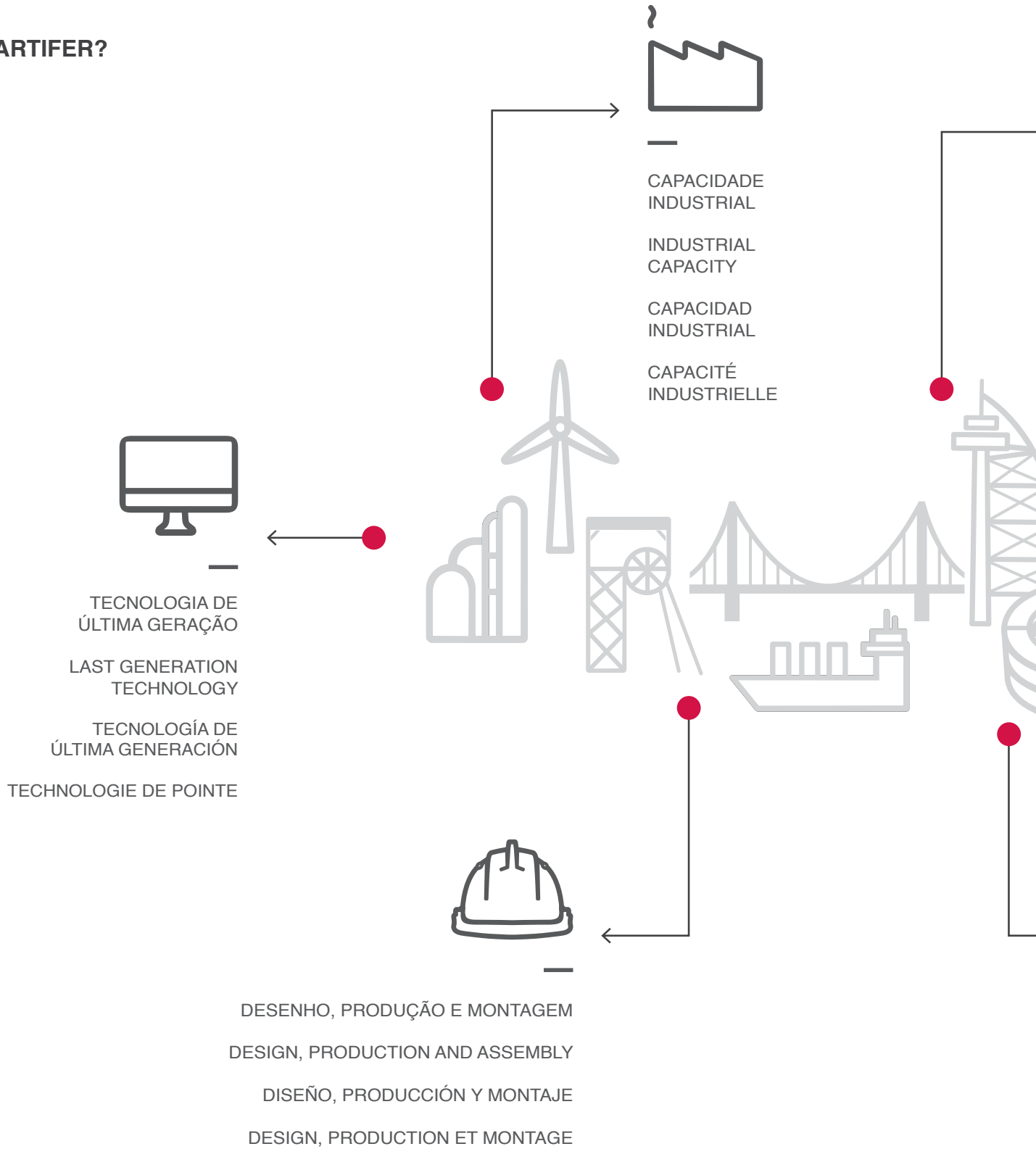
## **CPB** CONGRESS CENTRE EXPO ZARAGOZA

Client	Grupo Sacyr
Year	2007
Location	Zaragoza, Spain
Architect	Nieto Sobejano Arquitectos
Façade Consultant	Arup
Scope	24,000 sqm VEP curtain wall, VEC skylight, aluminium composite and metal mesh claddings





## WHY MARTIFER?





KNOW-HOW

SAVOIR-FAIRE



EQUIPAS  
MOTIVADAS  
E COMPETENTES

MOTIVATED AND  
COMPETENT TEAMS

EQUIPOS MOTIVADOS Y  
COMPETENTES

ÉQUIPES MOTIVÉES  
ET COMPÉTENTES



ELEVADOS STANDARDS DE QUALIDADE

HIGH QUALITY STANDARDS

ELEVADOS ESTÁNDARES DE CALIDAD

HAUT NIVEAU DE QUALITÉ

## CONTACTOS | CONTACTS

### PORTUGAL

Zona Industrial - Apartado 17  
3684-001 Oliveira de Frades  
**T.** +351 232 767 700  
**F.** +351 232 767 750

### ALGERIA

Parc Miremont, Boulevard F, Vila  
N° 156  
Chevalley - Bouzareah  
16000 Alger  
**T.** +213 (0) 21 93 80 12  
**T.** +213 (0) 21 93 74 77  
**F.** +213 (0) 21 93 70 37

### ANGOLA

Pólo Industrial de Viana  
Km 25, S/N, Apartado 21 - Viana  
Luanda  
Angola  
**T.** +244 922 56 00 52

### FRANCE

106 Rue Des Gémeaux  
BP 30466  
94613 Rungis Cedex  
France  
**T.** +33 (0) 146 86 80 46

### MOZAMBIQUE

Caixa Postal nº7,  
Estrada nº517 para Nacala velha  
Bairro de Locone  
código postal 3113  
Nacala-a-Velha, Nampula  
**T.** +258 269 12 46 8  
**F.** +258 210 47 68 3

### ROMANIA

**(Office)**  
Calea Mosilor nr. 51 etaj 5 Sector 3  
Bucuresti 030144  
**T.** +40 372 705 858/89| **F.** +40 213  
106 864

### **(Factory)**

Str. Prelungirea Bucuresti, nr 166  
Calarasi, 910513  
Romania  
**T.** +40 372 710 670  
**F.** +40 372 710 671

### SPAIN

C/Bruselas, n. 6 - B  
Polígono Industrial Európolis  
28232 Las Rozas de Madrid  
Madrid - Spain  
**T.** +34 916 378 282  
**F.** +34 917 103 042

### UNITED KINGDOM

26 - 28 Hammersmith Grove  
London  
W6 7BA  
**T.** +44 (0) 20 88 34 13 48

**info@martifer.com**  
**www.martifer.com**



[www.  
martifer.  
com](http://www.martifer.com)